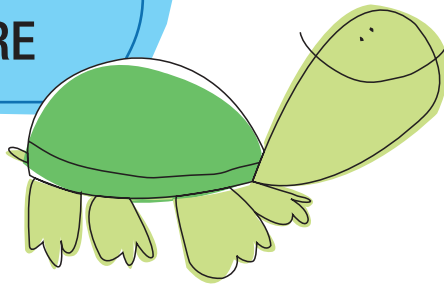


# FEE STRUCTURE



*Rates Effective October 2, 2023*

FULL-TIME WEEKLY RATE (up to 47 hours per week)	
Age Group	Full Time
Infants and Toddlers Under Two	\$205
Twos	\$190
Threes and Fours	\$180

Hourly Rate (over 47 hours)	\$20 per hour/per child
If later than 6:30 p.m. without 24-hour prior notification	\$1 per minute past 6:30 p.m.

**Extended Care:** As a reminder, we are happy to provide extended evening hours from 6:30 p.m. to 7:30 p.m. with a 24-hour notice so we can staff appropriately. However, if your child is not picked up by 6:30 p.m., and a 24-hour notice is not given, you will be subject to the late fee of \$1 per each minute late.

Additional Fees	
Enrollment Fee	\$125
Field Trip Fee* <i>*Four-year-old classes only</i>	One-time fee, to be announced yearly

## Vacation Days

You are allotted 5 vacation days per year. The calendar year for using vacation days is January 1 through December 31. These days DO NOT carry over to the next year if you do not use all allowed days for your child. Parents are required to fill out a vacation request form in order to receive credit for a vacation day. Vacation day request forms are located in the CDC office. There are no bereavement days. Parents may submit a vacation request form if they choose to use their vacation days for bereavement. If you enroll mid-year, the number of vacation days you receive will be adjusted according to the month you enroll.

## Sibling Discount

10% discount for two or more children in a single family applied to lowest tuition rate

## ABC Voucher

CDC accepts the ABC Voucher Program. Please contact the Department of Social Services for information on qualifying.

## Holidays

We are closed on New Year's Day, Memorial Day, July 4th, Labor Day, Thanksgiving Day and Christmas Day.

**All tuition will be payroll-deducted.**